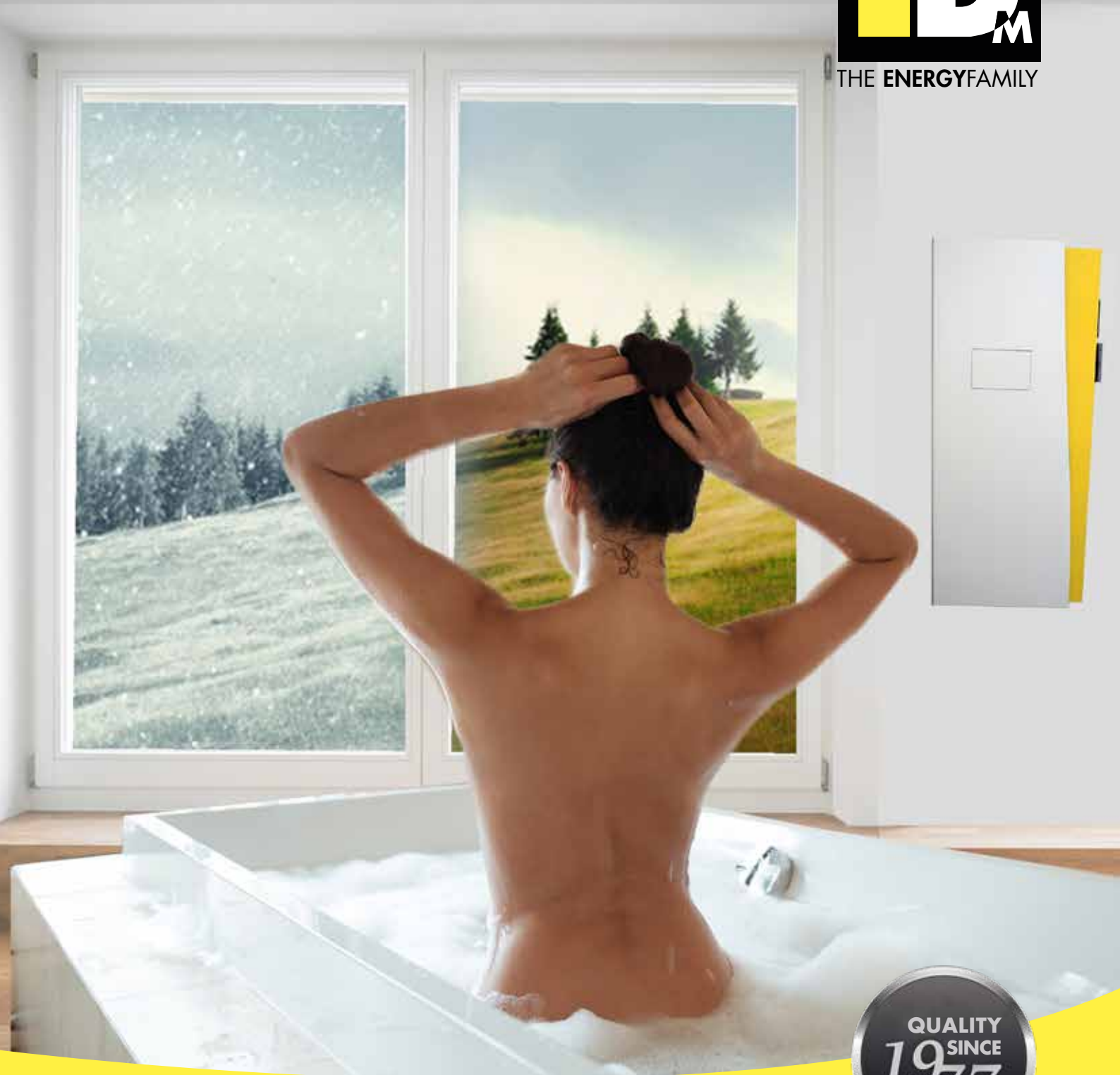


# FRESH WATER STATION 2.0



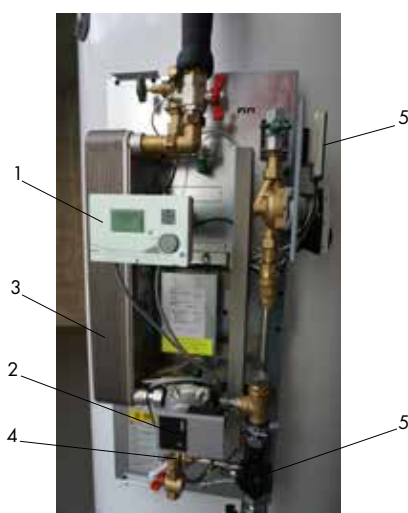
## HEAT PUMPS FROM AUSTRIA

[www.idm-energie.at](http://www.idm-energie.at)

# iDM FRESH WATER STATION 2.0

The **iDM fresh water station** ensures a comforting supply of hygienic hot water in a matter of seconds. The **stainless steel plate heat exchanger** (free of non-ferrous metal) guarantees long durability, high corrosion resistance and first class hygienical standard.

- ◉ **Stainless steel plate heat exchanger - free of non-ferrous metal**
- ◉ **Fresh water technology for hygienic hot water in a matter of seconds and a high level of convenience**
- ◉ **Completely pre-assembled**
- ◉ **Installation directly on the iDM Hygienik or on the wall**



If the fresh water station is to be operated without a navigator control, it is possible to use a **UVR 67** as control. A **heat quantity counter** can be mounted optionally.

1. Speed regulation UVR 67 (accessory)
2. High-efficiency-pump
3. Stainless steel plate heat exchanger - free of non-ferrous metal
4. Flow controller
5. Heat meter (accessory)

## TECHNICAL DATA

FRESH WATER STATION	25 l	35 l	50 l	70 l	25 l with mixing valve	35 l with mixing valve
Article number	<b>173300</b>	<b>173302</b>	<b>173304</b>	<b>173306</b>	<b>173310</b>	<b>173312</b>
Delivery output (l/min)	25	35	50	70	25	35
Pressure loss drinking water side (bar)	0,3	0,3	0,3	0,3	0,3	0,3
Max. operating pressure heating side (bar)	4	4	4	4	4	4
Max. operating pressure sanitary side (bar)	6	6	6	6	6	6
Max. operating temperature (°C)	85	85	85	85	85	85
Electrical connection	230V/50Hz	230V/50Hz	230V/50Hz	230V/50Hz	230V/50Hz	230V/50Hz
El. power consumption fresh water pump	50 watt	50 watt	50 watt	50 watt	50 watt	50 watt
Dimensions HxWxD (mm)	1000 / 440 / 260					

© **iDM ENERGIESYSTEME GMBH**  
 Seblas 16-18 | A-9971 Matrei in Osttirol  
 www.idm-energie.at | team@idm-energie.at

03.2020/818701 • iDM product sheet fresh water station  
 Changes & errors excepted.

